

Billing System

*Remote monitoring,
Automatic billing,
Low cost & high efficiency*



Description:

The billing system support to link with PMAC series of power meters/ energy meters

Include: PMAC600A, 600B, 615, 625, 720, 735, 901, 903



Function:

- 1) Communicate with up to 256 units of meters, remote collect data, 15 minutes interval.

Install billing software



Database server



Printer



Multi-serial port card

RS485/232
converter



1-phase energy meter



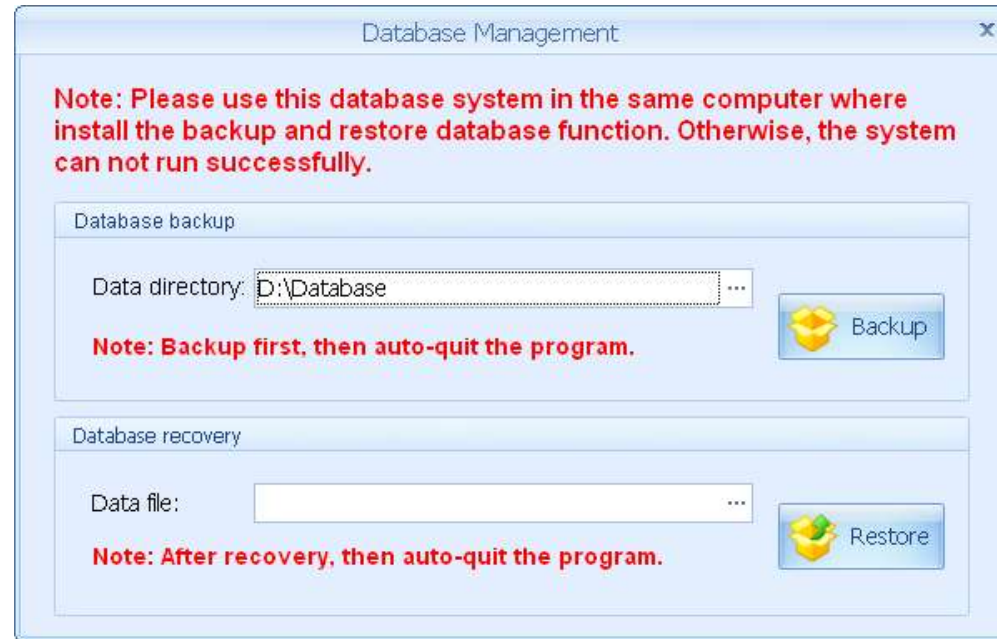
3-phase energy meter



Multifunction power meter

2) Data Management

Use free version SQL Sever Express, this server system automatically clear the expiry data. Support back up and restore function.

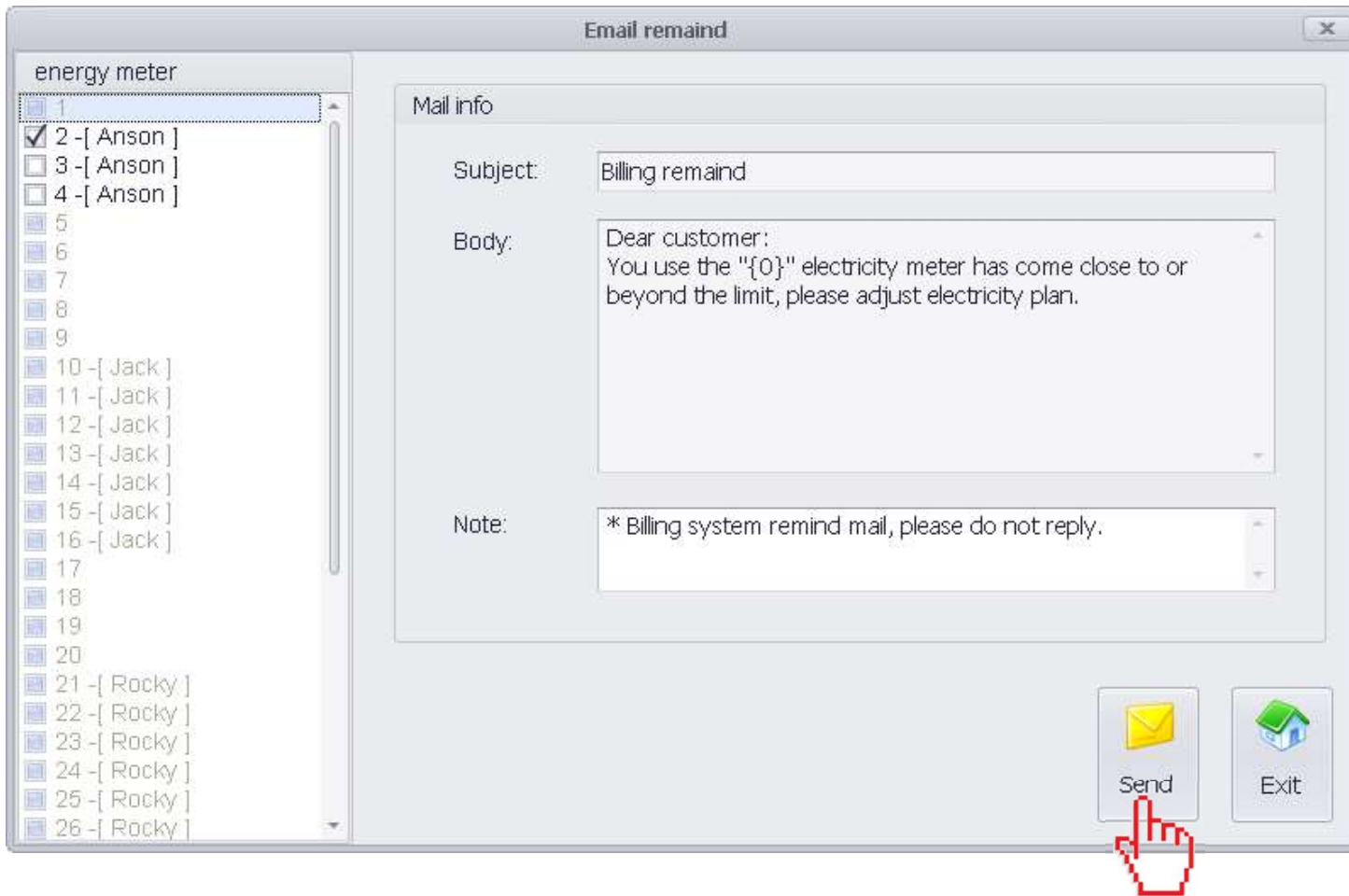


3) Outer billing function

The system no require on meters with billing function, support to use simple meters to save purchasing cost.

4) User management

Support to associate with multiple meters per user. The admin can remote inquiry all client's electricity consumption easily, and can send email to remind client about consumption.



Click to send email to client a remind email for their electric bill

5) Multiple tariff billing

Support multi-tariff / single tariff/ step tariff billing.

User also can set different tariff proposal for weekday/ weekend/ special holidays.

Total can set 9 periods, 6 tariff proposal.

Multi-tariff Consumption

Ordinary Day Consumption | Special Holiday Consumption

Tariff

Tariff1: 2.00 Tariff2: 1.00 Tariff3: 1.80 Tariff4: 0.50

Weekday Consumption			
Time Period	Start Time	End Time	Tariff
1	00:00:00	02:00:00	2
2	02:00:00	03:00:00	3
3	03:00:00	05:00:00	1
4	05:00:00	17:00:00	3
5	17:00:00	22:00:00	4
6	22:00:00	00:00:00	2
7			
8			
9			

Weekend Consumption			
Time Period	Start Time	End Time	Tariff
1	00:00:00	00:30:00	4
2	00:30:00	01:00:00	2
3	01:00:00	03:30:00	1
4	03:30:00	05:00:00	2
5	05:00:00	07:00:00	4
6	07:00:00	10:30:00	1
7	10:30:00	15:00:00	3
8	15:00:00	00:00:00	2
9			

Saturday Sunday Monday

Save Exit

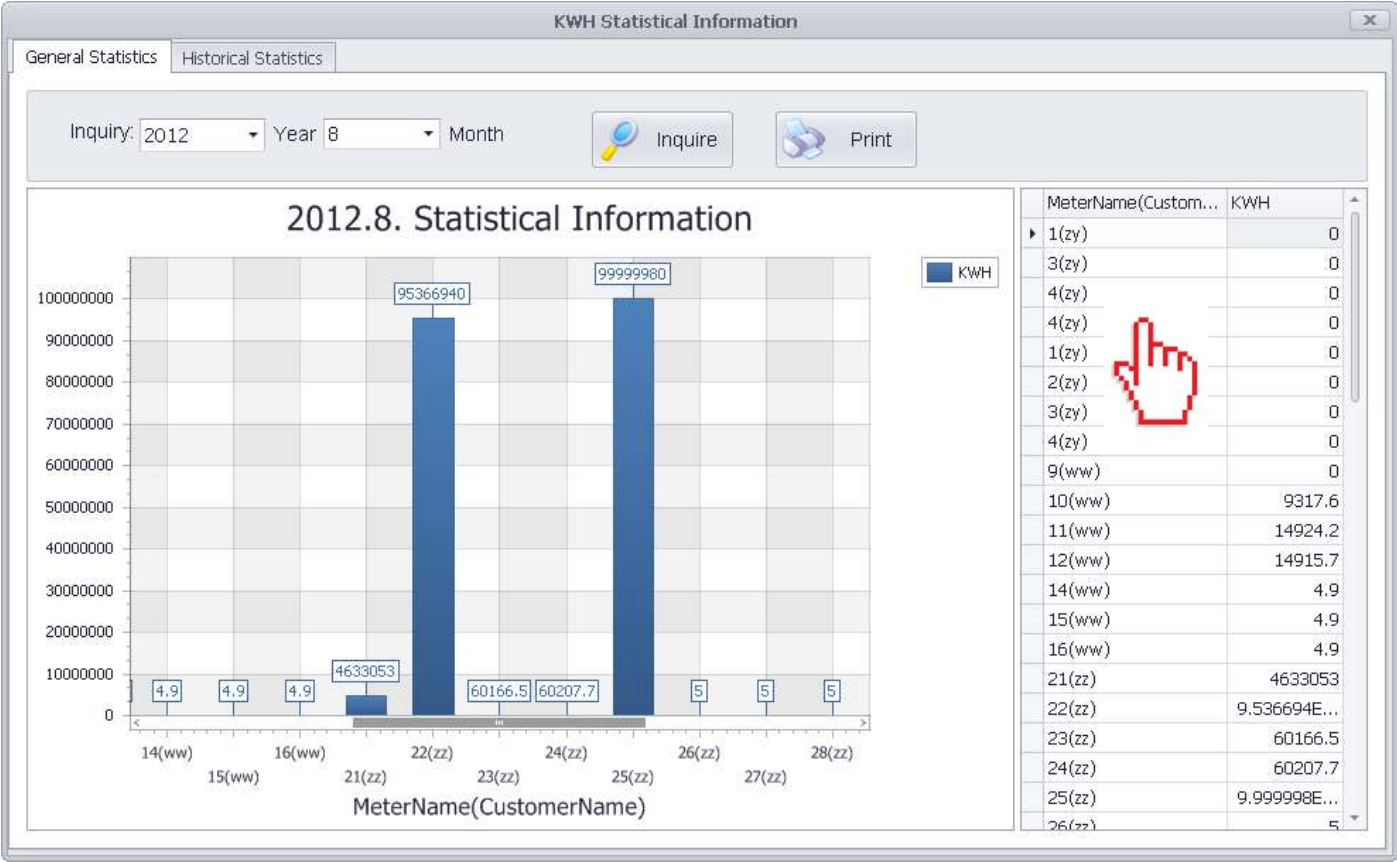
6) Auto-calculate public share electricity consumption

User can separately set some meters to collect the energy of public area. The public expenses can be charge to clients as per their area/ population/ energy consumption.

The screenshot shows a software window titled "Bill Generation" with two tabs: "All Bill Generation" and "Single Bill Generation". The "Single Bill Generation" tab is active. The interface includes the following sections:

- Select generate bill:** A section with four input fields: "Last date:" (2012-8-8), "Meter name of last time:" (dropdown), "Meter to generate bill:" (dropdown), and "Expiry date:" (2012-8-5).
- Total Share Price:** A section with a "Cal. share price" button (calculator icon) and a text box containing "0".
- Bill footer information:** A text area containing the following notice: "Attention:* From 8th to 18th of each month is the payment date for billing, delayed payment will be fined as per the power supplying regulations. * 25th still not paid, power supply will stop.* To avoid peak period in the Customer Services Hall, clients who need to pay by cash may take this notice to Banks (ICBC or CBC) and pay for the bill."
- Buttons:** Three buttons at the bottom: "Preview" (with a magnifying glass icon), "Generate" (with a green checkmark icon), and "Exit" (with a house icon).
- Progress:** A progress bar at the bottom center showing "0%".

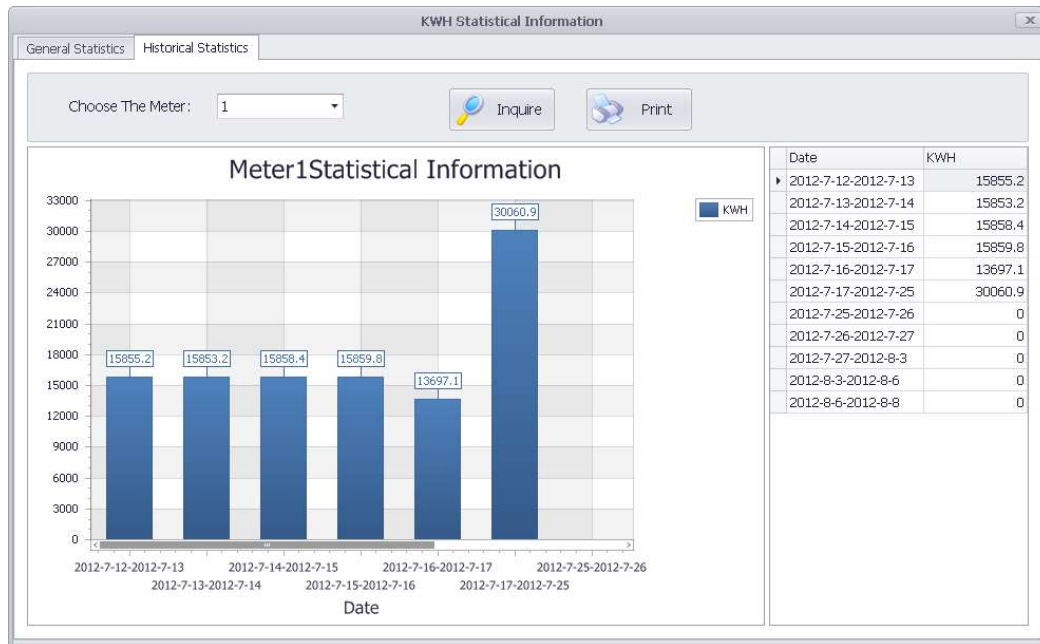
7) Automatic bills for single or multiple meters
Compare the energy consumption of different meters.



Click to select device to view billing reports for single or multiple devices

8) Daily/ Monthly/ yearly report, graphical analysis

Click to select date range to instantly generate historical or up-to-date billing reports in monthly or yearly



Billing consumption notification

Bill No.:6347899249268750000 Customer Name:ww Customer Address:
 Meter Name:9 Penalty starting Date:2012/8/6 Billing period:From 2012/7/17 To 2012/7/18
 Last Reading Value:41352.1KWH New Reading Value:46956.8KWH Billing Generation Date:2012/7/27

Tariff	Scope	Price(USD)	Consumption(Kwh)	Money(USD)
Tariff1	03:00:00-05:00:00	2.05	659.3	1,351.56
	00:00:00-02:00:00	1.50	659.3	988.95
Tariff2	22:00:00-00:00:00			
Tariff3	02:00:00-03:00:00	1.76	4286.1	7,543.54
	05:00:00-17:00:00			
Tariff4	17:00:00-22:00:00	0.50	0.0	0.00
Holiday			0.0	0.00
Subtotal			5604.7	9,884.05
Share				0.00
Tariff Items		Expenses(USD)	Tariff Items	
Subtotal:		9884.05	Electricity consumption:	
Share expenses:		0	19,768.10	
Total tax:		9884.05		

Attention:
 from 8th to 18th of each month is the day of billing, delayed payment will be fined as per the power supplying regulations. 25th still not paid, power supply will stop. To avoid the payment of the peak period of electricity service charges, users that require payment by cash, holders of this notice select the city Construction Bank \ Industrial and Commercial Bank of China outlets to pay electricity bills.