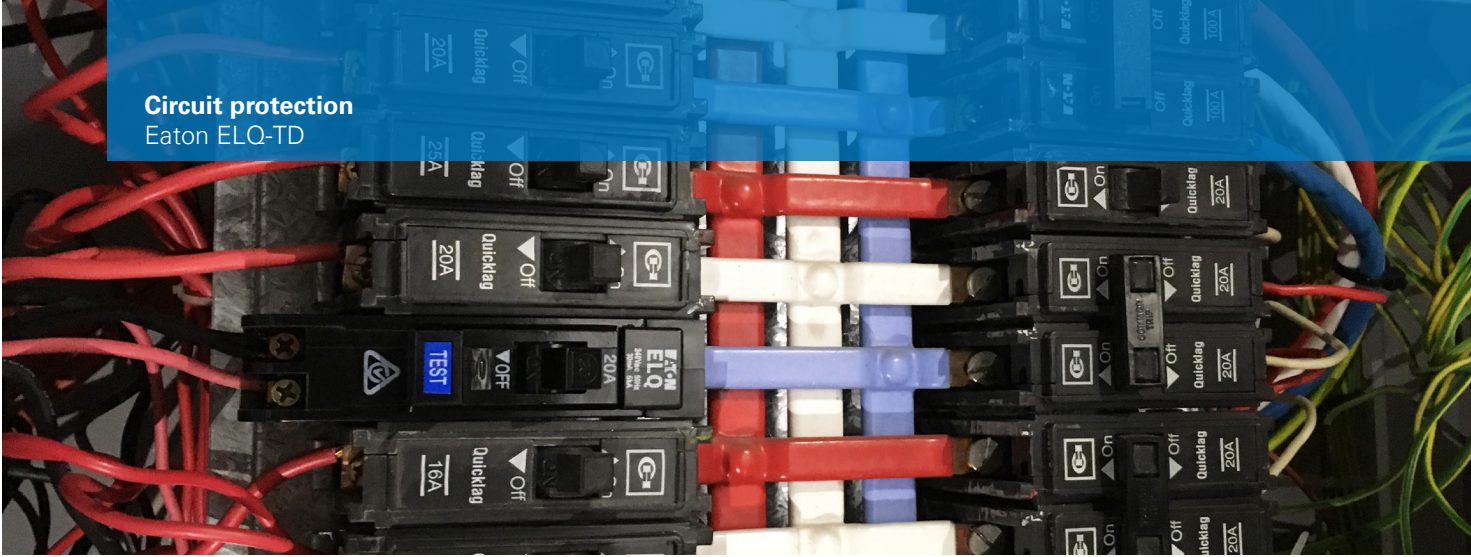


**Circuit protection**  
Eaton ELO-TD



# Combined MCB/RCD devices ELO-TD

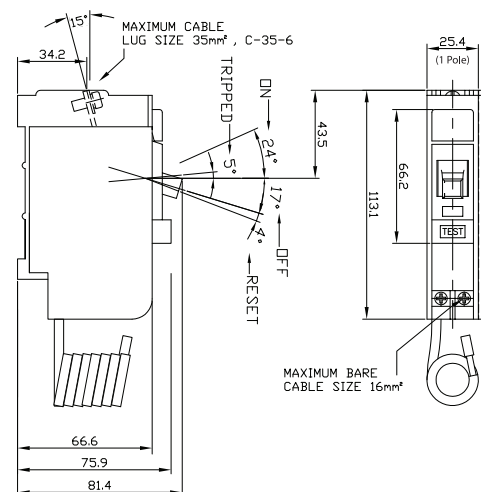
## Features at a glance

- Combined MCB/RCD device
- Permanent connected neutral conductor (950mm)
- Rating breaking capacity  $6kA_{rms}$
- Complies with AS/NZS 3190:2016 and AS/NZS 3111:2009+A1-2
- Australian approval number NSW27675



Item no.	Rating (A)	Sensitivity
ELQ110C3TD	10	30mA
ELQ116C3TD	16	30mA
ELQ120C3TD	20	30mA
ELQ125C3TD	25	30mA
ELQ132C3TD	32	30mA
ELQ110C1TD	10	10mA
ELQ116C1TD	16	10mA
ELQ120C1TD	20	10mA
ELQ125C1TD	25	10mA
ELQ132C1TD	32	10mA
ELQ110C10TD	10	100mA
ELQ116C10TD	16	100mA
ELQ120C10TD	20	100mA
ELQ125C10TD	25	100mA
ELQ132C10TD	32	100mA

## Dimensions (mm)



## DIN Fuse back-up data

RCBO Item no.	Breaking Capacity	Eaton Upstream Fuse Link Item no.	Three-phase prospective short circuit current	Pre-arcing I <sup>2</sup> t (A <sup>2</sup> s)	Total I <sup>2</sup> t @ 500V (A <sup>2</sup> s)	Peak cut-off current @ 50kA <sub>rms</sub>	Watts Loss
ELQ110CxTD	6 kA <sub>rms</sub>	F5GG200U1	50 kA <sub>rms</sub>	97,000	368,600	18 kA <sub>pk</sub>	15 W
ELQ116CxTD	6 kA <sub>rms</sub>	F5GG200U1	50 kA <sub>rms</sub>	97,000	368,600	18 kA <sub>pk</sub>	15 W
ELQ120CxTD	6 kA <sub>rms</sub>	F5GG200U1	50 kA <sub>rms</sub>	97,000	368,600	18 kA <sub>pk</sub>	15 W
ELQ125CxTD	6 kA <sub>rms</sub>	F5GG200U1	50 kA <sub>rms</sub>	97,000	368,600	18 kA <sub>pk</sub>	15 W
ELQ132CxTD	6 kA <sub>rms</sub>	F5GG200U1	50 kA <sub>rms</sub>	97,000	368,600	18 kA <sub>pk</sub>	15 W

## BS88 Fuse back-up data

RCBO Item no.	Breaking Capacity	Eaton Upstream Fuse Link Item no.	Three-phase prospective short circuit current	Pre-arcing I <sup>2</sup> t (A <sup>2</sup> s)	Total I <sup>2</sup> t @ 415V (A <sup>2</sup> s)	Peak cut-off current @ 50kA <sub>rms</sub>	Watts Loss
ELQ110CxTD	6 kA <sub>rms</sub>	TF160L	50 kA <sub>rms</sub>	57,000	135,000	17 kA <sub>pk</sub>	13 W
ELQ116CxTD	6 kA <sub>rms</sub>	TF200L	50 kA <sub>rms</sub>	120,000	290,000	22 kA <sub>pk</sub>	14 W
ELQ120CxTD	6 kA <sub>rms</sub>	TF200L	50 kA <sub>rms</sub>	120,000	290,000	22 kA <sub>pk</sub>	14 W
ELQ125CxTD	6 kA <sub>rms</sub>	TF200L	50 kA <sub>rms</sub>	120,000	290,000	22 kA <sub>pk</sub>	14 W
ELQ132CxTD	6 kA <sub>rms</sub>	TF200L	50 kA <sub>rms</sub>	120,000	290,000	22 kA <sub>pk</sub>	14 W



Powering Business Worldwide

Eaton  
Experience and Technology Centre  
10 Kent Road  
Mascot NSW 2020  
Tel: 1300 332 866  
Email: [australiasales@eaton.com](mailto:australiasales@eaton.com)  
[www.eatoncorp.com.au](http://www.eatoncorp.com.au)  
June 2017