

Compact high speed fuses



Lead the charge with compact designs



Bussmann series 50-400 amp compact high speed fuses use up to 48% less enclosure space.



Product description:

Eaton answers the call for compact drives, power conversion and UPS equipment with our new Bussmann® series compact high speed fuses.

Our 50-400 amp fuses use up to 48% less enclosure space when compared with traditional high speed, round body fuses. What's more, the innovative design allows for a significantly smaller package without compromising heat rise performance.

With the most compact high speed 500Vac/dc fuses in the industry, we help you achieve smaller overall equipment designs.

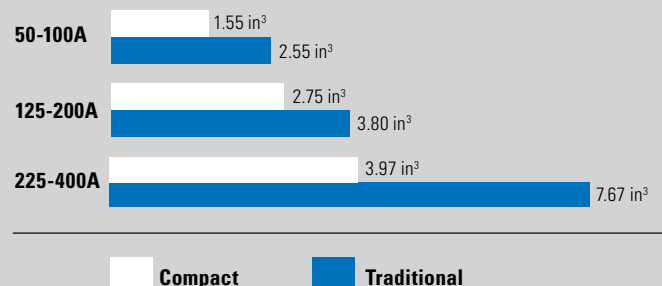
Features and benefits:

- Using up to 48% less enclosure space allows for a reduction in the overall size of power conversion equipment.
- Innovative design allows for a significantly smaller package without compromising heat rise performance, preventing extensive equipment redesign.
- Global acceptance with UL®, CSA® and IEC® for products sold worldwide.
- Bolt-on design provides design flexibility for installation in fuse blocks or direct mounting on busbars.



Bussmann series compact high speed fuse compared to a traditional high speed, round body fuse.

Size comparison



Powering Business Worldwide

Specifications

Ratings

- Volts - 500Vac/dc
- Amps – 50-400A
- Interrupting rating
 - Max AC – 200kA
 - Min AC 400%
 - Max DC – 50kA
 - Min DC 800%
- Conforms to IEC® aR specifications for short-circuit protection

Agency information

- UL Recognized, File E56412, Guide JFHR2
- CSA Component Acceptance, Class 1422-30, File 53787
- IEC aR (self certified)
- CE
- RoHS compliant
- REACH declaration available upon request

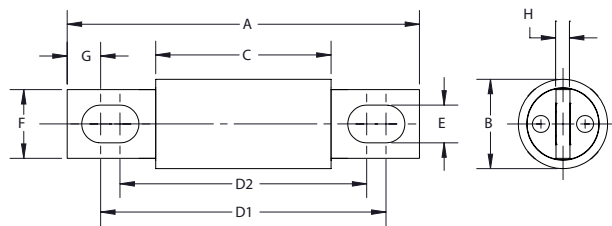
Catalog numbers:

Catalog number	Amps	AC/DC I ² t (A ² s) pre-arcing	AC* I ² t (A ² s) total clear	DC** I ² t (A ² s) total clear	Watts loss / percent of rated current	
					@ 80%	@ 50%
CHSF-50	50	304	1875	935	3.8	1.3
CHSF-60	60	438	2700	1346	4.5	1.5
CHSF-70	70	596	3675	1833	5.3	1.8
CHSF-80	80	778	4800	2394	6.1	2.0
CHSF-100	100	1216	7500	3740	7.6	2.5
CHSF-125	125	2042	12,721	6465	12.0	3.6
CHSF-150	150	2941	18,318	9309	14.3	4.3
CHSF-175	175	4003	24,933	12,671	16.7	5.1
CHSF-200	200	5228	32,566	16,550	19.1	5.8
CHSF-225	225	6835	48,028	21,278	26.1	7.0
CHSF-250	250	8438	59,293	26,270	29.0	7.8
CHSF-300	300	12,151	85,382	37,828	34.8	9.4
CHSF-350	350	16,539	116,215	51,488	40.6	10.9
CHSF-400	400	21,603	151,791	67,250	46.4	12.5

* @ 200kA/500Vac.

** @ 50kA/500Vdc.

Dimensions — mm:



Case size amp range	A	B	C	D1	D2	E	F	G	H
50-100	81	20	40	61	57	8.7	16	7.7	3.2
125-200	92	25	53	77	68	8.7	19	7.8	3.2
225-400	92	30	53	74	68	8.7	25	9.0	4.8

Eaton
1000 Eaton Boulevard
Cleveland, OH 44122
United States
Eaton.com

Bussmann Division
114 Old State Road
Ellisville, MO 63021
United States
Eaton.com/bussmannseries

© 2015 Eaton
All Rights Reserved
Printed in USA
Publication No. 10459
November 2015



Recommended fuse blocks

Up to 100 amps

Catalog numbers	Wire size	Stud size
BH-0111	#14-2/0 Cu	1/4-20
BH-0112	#14-2/0 Cu	5/16-18
BH-0121	(2) #14-1/0 Cu	1/4-20
BH-0122	(2) #14-1/0 Cu	5/16-18
1BS101	#14-2/0 Cu	1/4-20 x 1/2

See data sheet No. 1200 (BH-01_) and No. 1206 (1BS101) for details.

Up to 400 amps

Catalog numbers	Wire size	Stud size
BH-1131	#6-250kcmil Cu	1/4-20
BH-1132	#6-250kcmil Cu	5/16-18
1BS102	#6-250kcmil Cu	1/4-20 x 1/2

See data sheet No. 1201 (BH-11_) and No. 1207 (1BS102) for details.



Eaton and Bussmann are valuable trademarks of Eaton in the US and other countries. You are not permitted to use the Eaton trademarks without prior written consent of Eaton.

CSA is a registered trademark of the Canadian Standards Group.
IEC is a registered trademark of the International Electrotechnical Commission.
UL is a registered trademark of the Underwriters Laboratories, Inc.

For Eaton's Bussmann series product information, call **1-855-287-7626** or visit: **Eaton.com/bussmannseries**

Follow us on social media to get the latest product and support information.

